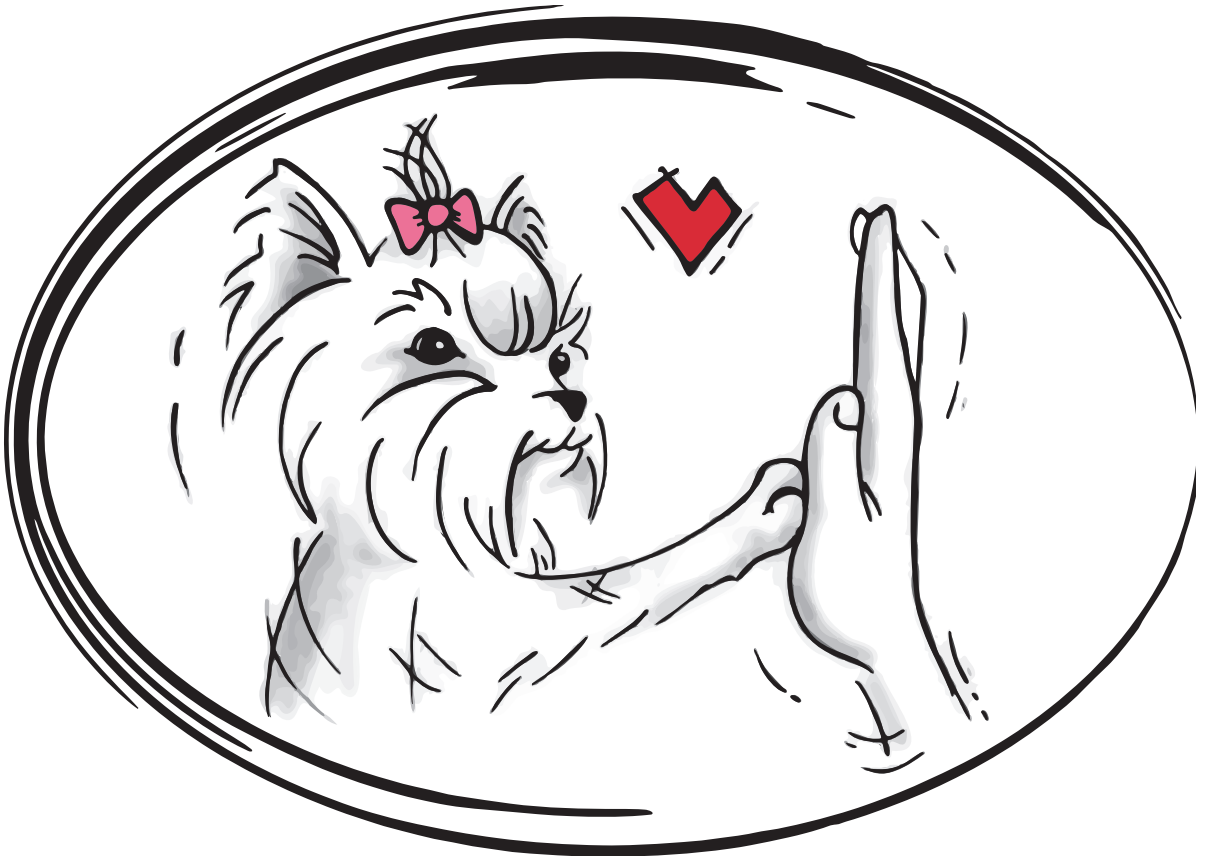




RainbowAmour

# Welcoming Your New Puppy Home



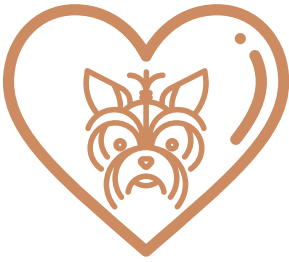


***Rainbow Amour is  
a small, in-home  
Biewer Terrier  
Breeding Kennel  
based in Edmonton  
(Alberta), where  
we pride ourselves  
on the quality and  
temperament of  
this beautiful toy  
breed.***



# RainbowAmour

## Our Promise



### Quality over Quantity

We produce few litters per year to ensure the quality of each puppy.



### Pets are Family

Our dogs are always in our house and part of everything we do.



### Raw Fed

Our dogs are raw fed.



# Bringing Your Puppy Home

Congratulations on taking your new Rainbow Amour puppy home! The wait was worth it, trust us! Please remember that you may be very happy and excited to take your puppy home, but your puppy is going to be stressed and may even be scared by the change. It is important to give them time to acclimatise to their new life before introducing too many new things. It is ideal to slowly introduce your puppy to things such as new foods, family members, other pets, strangers, etc. A stressed puppy will exhibit sickness symptoms such as diarrhea, vomiting, loss of appetite, etc. If you notice any of these signs, please give your puppy time to adjust before adding anything else that is new to the puppy. If these signs persist for more than a few days or become severe to the point that the puppy is showing signs of severe lethargy or hypoglycemia (more information further), please consult your vet.



Your puppy will come with a selection of toys that the whole litter got to play with. It is important to give these toys to your puppy as they smell like their littermates and will help with the transition. Please hold off on washing these toys until your puppy is feeling perfectly comfortable in your new home (1-2 weeks).

Your puppy will also come with a blanket that was given to mom for a few days. It is important to give this blanket to your puppy as it smells like mom and will help with the transition. Please hold off on washing this blanket until your puppy is feeling perfectly comfortable in your new home (1-2 weeks).

## Food

Your puppy has been weaned onto a raw diet. At Rainbow Amour, we like to feed the brand Legacy Pet Foods, which we purchase at Homes Alive Pets, but can also be found at Bone and Biscuit, Pet Planet, and surely others. We get both types of variety boxes, and rotate through six different mixtures. Your puppy knows and loves each flavour in these variety boxes.

We highly suggest you keep your new puppy on a raw diet, as it has many benefits. Such benefits include, but are not limited to: better overall health, healthier skin and coat, leaner body, cleaner teeth, smaller and less frequent poops (which are also less smelly, and highly biodegradable), shorter ingredient list (no fillers) and smaller portions required. When feeding raw, you do not require a puppy formula. You simply feed your puppy about double what you would feed an adult. Portions are calculated by weight. Please refer to the guide provided on the bag of food you choose to purchase.

We also understand that not everyone is able to feed a raw diet, as it requires more planning than kibble feeding. If you are unable to keep

your puppy on a raw diet, we suggest you look into feeding a freeze dried raw diet, which gives the benefits of raw with the convenience of kibble. Some popular brands are Stella and Chewys, Orijen and Rawbble. You could also look into an air dried diet, which gives most of the benefits of raw with the convenience of kibble. Some popular brands are ZiwiPeak and Zeal Canada.

If you must switch your puppy onto a kibble diet, we suggest choosing a high protein, grain free, low carb and low legume diet such as Orijen. Please note that Acana has much higher legume levels.

Many vets will discourage raw feeding as it is more complicated than kibble. Look for a Holistic vet in your region to help you with raw feeding. Please feel free to do your own research into the benefits of raw before making your choice.





## Treats

Feel free to start treating your puppy with small pieces of dehydrated or freeze dried meat such as beef liver or chicken breast. These treats are very healthy and do not counter the benefits of raw feeding. Please try to avoid treats containing flour when raw feeding, as these may counter the benefits of raw. Ensure that your puppy has eaten a full meal before feeding too many treats, as you don't want them to spoil their meal.

When your puppy is a bit older, it is ideal to add healthy chews to promote teeth and gum health. Some awesome chews include, but are not limited to, Bully Sticks (Pizzle Sticks), Antlers, Himalayan Cheese and raw bones (can be found at butchers or



## Health Care

Your puppy has had three shots (Four Way, which covers distemper, adenovirus, parainfluenza and parvovirus, aka DAPP). Your puppy has also been dewormed a minimum of three times with Strongid-T. Your puppy may require a booster shot to be administered before 16 weeks of age. Please follow your vet's instructions on this matter. Your puppy will also require their Rabies vaccine. Please follow your vets instructions on this matter.



Your puppy has been seen by Dr Sam at Herbers Veterinary Services and has received a clean bill of health. During this appointment, Dr Sam looked at your puppy's physical appearance, including patellas and hips, heart sounds, organ placement, eyes, ears, mouth/bite, and temperature.



## Teeth

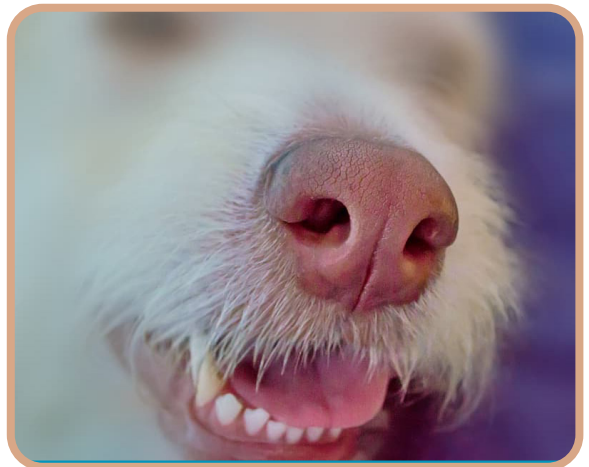
Small dogs are known for having bad teeth (tartar/plaque build up). There are many reasons for this, which include, but are not limited to: poor quality nutrition, lack of chew toys/treats, lack of desire to chew, genetics or retained baby teeth.

Tartar buildup is known to cause many issues in dogs, which include, but are not limited to: stinky breath, infected and swollen gums (gingivitis), painful jaw/teeth, cavities, tooth decay and tooth loss (sometimes requiring extraction). Teeth health is even linked to heart disease, as bad bacteria from the mouth constantly enters the bloodstream and affects multiple organs, such as the heart.

Biewers are known to retain baby teeth. This means that their first set of teeth don't fully fall out on their own. The adult teeth come in and must grow beside the retained baby teeth, often causing crowded teeth. If left untreated, retained baby teeth can cause serious dental issues in adult dogs. We recommend having any retained baby teeth removed during the spay/neuter of your puppy. Your vet may suggest to hold off on the spay/neuter until adult teeth

are visible to allow for safe extraction of the retained baby teeth.

To avoid having teeth issues with your puppy, we recommend being proactive and taking some important measures. These measures include, but are not limited to: a raw (or high quality) diet, dental chews, brushing of teeth at home and booking a dental appointment with your veterinarian if the tartar buildup becomes too much. To brush your puppy's teeth choose a small, soft bristled brush (cat or baby toothbrushes work great) and a pet appropriate toothpaste. Be sure to brush all of the teeth, including the molars. It is normal for the gums to bleed in the beginning.





## Hypoglycemia

Stress may cause your puppy to not eat, which can quickly lead to hypoglycemia (low blood sugar levels). If hypoglycemic, your puppy will show symptoms such as lethargy/ weakness, lack of coordination (walking “drunkenly”), trembling, muscle twitching, seizures or discoloration of skin and gums. When hypoglycemic, puppies will usually not eat or drink on their own. If you notice any of these signs, immediately give a source of sugar (such as corn syrup, honey, AdultCal or NutriCal) orally and call your vet for further assistance. If severe, your vet may require you to come in for treatment.



In order to avoid hypoglycemia in your puppy, please ensure your puppy is eating every 6-8 hours. If your puppy is showing loss of appetite, give about ¼-½ tsp of a source of sugar (such as corn syrup, honey, AdultCal or NutriCal) every 6-8 hours. It can be useful to purchase a tube of either AdultCal or NutriCal at your local pet store and keep in on hand in case of an emergency.

## Microchip

Your puppy has already been microchipped. Your dog's microchip and tag numbers have been provided to you in the Adoption Agreement and with their health records. Please register your puppy's chip and tag numbers with EIDAP by going to [www.eidap.com](http://www.eidap.com) and creating your personal account.





# House Training

It is very important to be consistent with house training your new puppy as Biewers can sometimes be a little challenging. Being very small, they get cold easily outside and can choose to use the inside of your house as their potty area. Bring your puppy outside often (every hour if you need to). Also keep an eye out for when your puppy eats or drinks. Immediately after they are done, bring them back outside. If they decide to pee/poop outside, be sure to give them huge amounts of praises! Use the word you want them to associate to this action, such as “Go potty! Yes, good girl/boy!”. The praise needs to be given immediately after the action has been done by your puppy to have the maximum effect. Feel free to offer small food rewards as well as verbal praise.

It is important to give your puppy the means to tell you that they need to go. Bells are a great way to do this. By showing the puppy how to ring the bell (either hanging bells or call bells on the floor), you are teaching the puppy that by ringing the bell, they will be let outside. Use many praises and treats while teaching your puppy to use a bell.

Accidents will happen and they don't always indicate a setback. Make it understood to your puppy that this is not what you want by lowering the tone of your voice (not yelling, but simply making your voice deeper). Use words such as “No, go potty outside” and immediately bring your puppy outside again. Never hit your puppy or yell at them for bad behaviour, as this will only scare them and not teach them right from wrong. It will be much harder to train your puppy if you raise your voice or use physical punishments.

Should you choose to train your puppy to use puppy pads, the process will be very similar, only instead of taking your puppy outside, you will bring them to the pee pad. Avoid changing the location of the pee pad until your puppy is old enough to understand that you expect them to use the pad every time.



## Harness vs. Collar

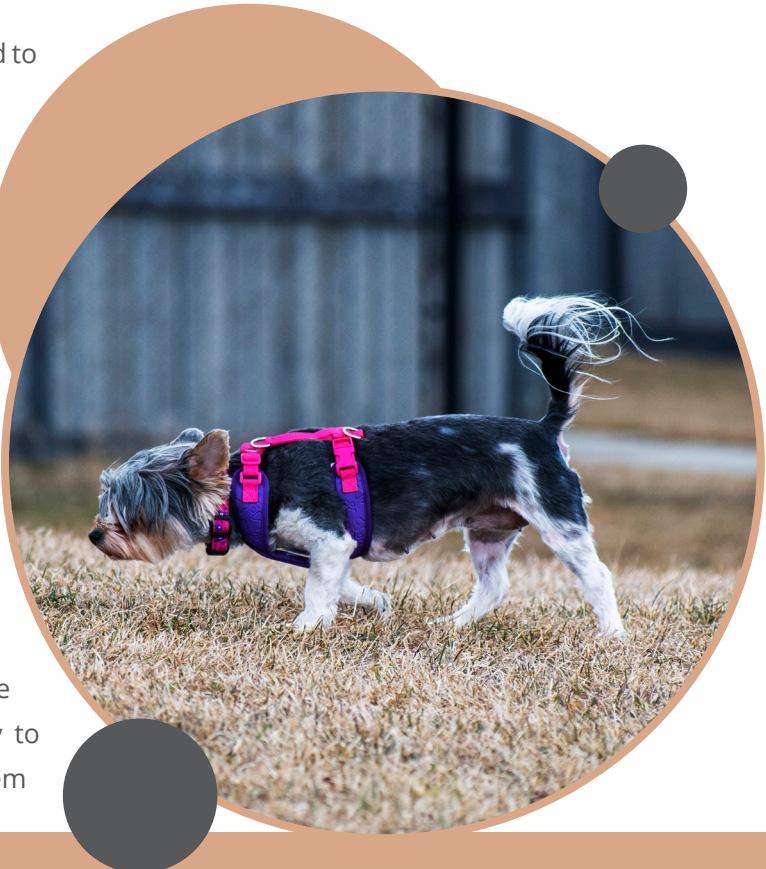
Biewers are known to have weak tracheas. They can easily live with this problem, but it takes small adjustments on your part. Please feel free to put a collar on your puppy with a name tag, but you should never walk your Biewer puppy on a leash attached to the collar. Always attach the leash to a harness that puts the pressure on the chest instead of on the neck.

Walking your puppy on a leash attached to a collar will put pressure on the trachea and could cause tracheal spasms (the dog makes a weird honking noise called a Reverse Sneeze) or tracheal collapse (the dog can not breathe as their trachea has fully collapsed and is blocking the air from reaching the lungs).

Tracheal spasm can happen often with Biewers. You may hear the noise when your puppy gets too excited, eats too fast, or plays too hard. If your puppy starts to reverse sneeze, do not worry. Get the puppy to calm down, pet them and reassure them

with a gentle voice. It usually takes up to 30 seconds to resolve. Once done, the puppy will resume normal behavior.

In the event of a tracheal collapse, there is very little that you can do. You can call the vet and try to rush them there, but there is a high probability that the dog won't survive.



## Fragile

Keep in mind that at 12 weeks old, your puppy is still very small and very fragile. Avoid bringing your puppy up on furniture until they are able to jump up on their own. A short fall from the couch or the bed could be enough to break a leg.



If you choose to bring your puppy up onto furniture, be sure to constantly supervise them and to prevent them from jumping down. If a fall were to happen, keep a very close eye on your dog, and bring them to the vet immediately if anything looks suspicious.

Even while playing with them, avoid rough play as it is very hard to say what would be too much for your puppy. Allow them to set the pace of the play.

Be extra careful with allowing small children to play with your puppy. Always be there to supervise and never let a young child alone with your puppy.

## Toys

Your puppy will be sent home with a selection of toys that the whole litter has been playing with for about a week. Do not worry if a toy has a small rip in it or a few stains. Refrain from washing the toys for a few weeks, to allow your puppy time to get used to their new family, while still having toys that smell like their siblings.



Your puppy will also be sent home with a blanket that was given to mom for a few days. Do not worry if the blanket has a small rip in it or a few stains. Refrain from washing the blanket for a few weeks, to allow your puppy time to get used to their new family, while still having a blanket that smells like their mom.



RainbowAmour

**Please communicate with us  
about your puppy needs!**

**We also want to receive pictures  
and updates.**



**780-860-7400**



**RainbowAmour.ca**